

GT3 Installation Hub -- Model 10-5063

Parts List:

- Hub assembly (1)
- Mounting screws (3)
- Column wire assy (1)
- Ground wire (1)
- Roll pin (1)
- Washer (1)



FITMENT:

- GM Trucks** 1970-73 All pickups, Suburban, Blazer, Jimmy
- Vans** 1970-75 Chevy / GMC vans

NOTICE

Airbag equipped vehicles: GT Performance Products steering wheels and hubs are **not** designed for use on Airbag equipped vehicles. **Due to Safety and Legal reasons**, we do **not** recommend changing, altering or removing the airbag from any vehicle.

PRE-INSTALLATION INSTRUCTIONS

- A) **Read all instructions completely prior to installation process!**
- B) Align wheels on vehicle straight ahead and disconnect battery.
- C) **Removal of Original or Custom Steering Wheel:** Refer to shop manual for your vehicle or manufacturer of custom steering
Note: A steering wheel or gear puller may be required.

INSTALLATION INSTRUCTIONS

- 1) **Turn signal canceling.** Check backside of original wheel cancel pin for proper location and install pin into appropriate hole in back of hub. Make sure to rotate seam in roll pin to face inward towards the center of hub and then tap w/ hammer to install. (Photo A)
- 2) Note **"top"** marking on hub (2 vertical dimples which indicate top), and position hub onto shaft and insert wire assembly (Photo B)

Photo A

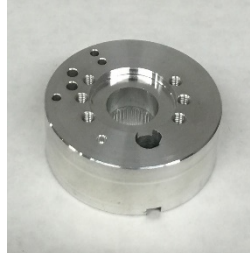
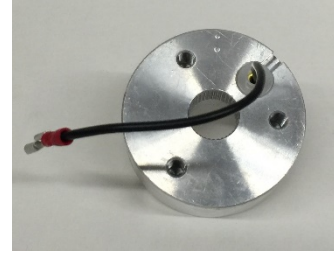


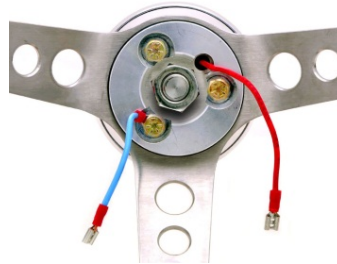
Photo B



"Top"

- 3) Position hub cover and steering wheel onto hub, carefully routing wire thru hole on right side of cover and wheel. Install washer and shaft nut loosely to hold assembly in position.
- 4) Place horn button base with O-ring onto wheel and install using the (3) three mounting screws, placing the ground wire under one of the screws. (Photo C)

Photo C



- 5) Tighten shaft nut and mounting screws. **CAUTION:** Do not over tighten mounting screws; this will cause damage to the hub.

TORQUE REQUIREMENTS

Shaft nut: 25 / 30 ft. lbs.
Mounting screws: 10 / 12 ft. lbs.

- 6) Connect wires to bottom of horn button and carefully push horn button onto base over O-ring until the horn button is flush with surface of wheel. (Photo D) **Note:** If necessary, slightly wet the O-ring to ease installation.

CAUTION: Be careful not to pinch wires when installing horn button onto base.

Photo D



- 7) Reconnect battery and test operation of horn and turn signal canceling.

NOTE: **TO REMOVE HORN BUTTON:** Insert small, non-marring plastic blade, or screw driver between notch on bottom of horn button and wheel surface and carefully pry to release.

**GT Performance Products LLC
Limited Warranty Policy**

We warrant our products ninety (90) days from the date of original purchase to be free from defects in material and workmanship. If, during this period, the product fails under normal usage because of a manufacturing defect, then we will replace or repair the item. To obtain repair or replacement under the terms of this warranty, notify us at, GT Performance Products, 2070 Floyd Street, Burbank, CA 91504. Proof of purchase and date of purchase are required to validate warranty.

All implied warranties, including the warranty of merchantability, are limited to the same ninety-day period from date of purchase. We are not liable for any consequential loss or property damage arising from any use of this product. This warranty gives you specific legal rights, and you may also have other rights which vary from state to state. Offer good in U.S.A. and Canada only.

NOTICE:

For your own safety, do **not** use this product for any competitive or racing purposes; Racing does not constitute intended usage and therefore makes this warranty void.